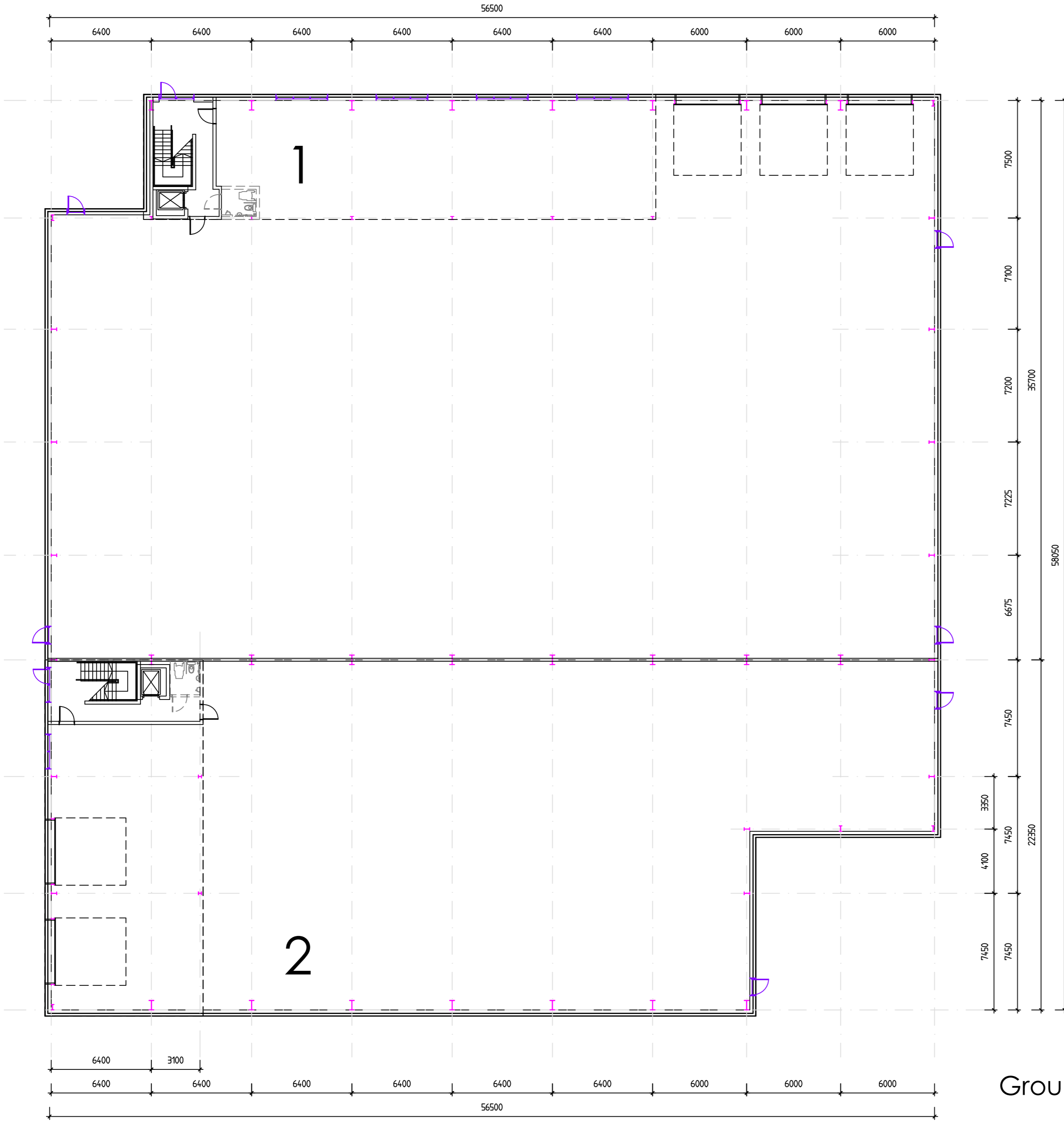
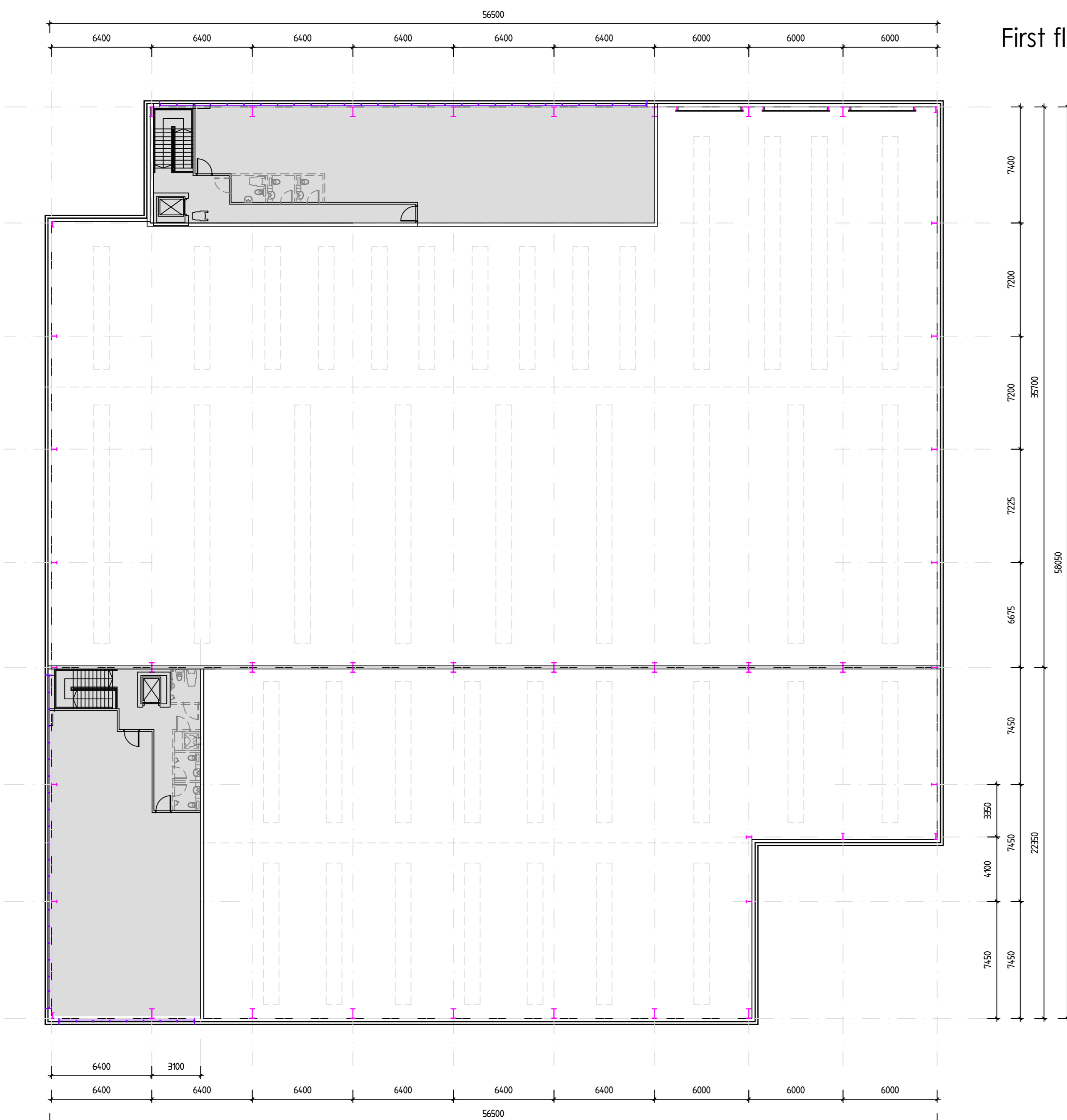


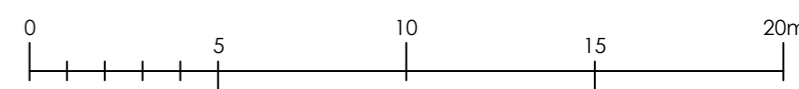
CBC Unit	Gf. area	Mezz area	Total (GFA)
1	2,020m ²	260m ²	2,280m ²
2	1,165m ²	230m ²	1,395m ²
Total	3,185m²	490m²	3,675m²



Ground floor plan



First floor plan



- Rev D:
- Rev C:
- Rev B: 14-3-2016: Lift and future toilet locations added
- Rev A: 26-7-2016: Loading door added to unit 2, window moved in unit 2, FE door in unit 1 amended

Notes
This drawing is the sole copyright of IAN C KING Associates and no part may be reproduced without the written consent of the above

Job
**Chancerygate
Enfield**

Title
**Units 1 and 2
Floor Plans**

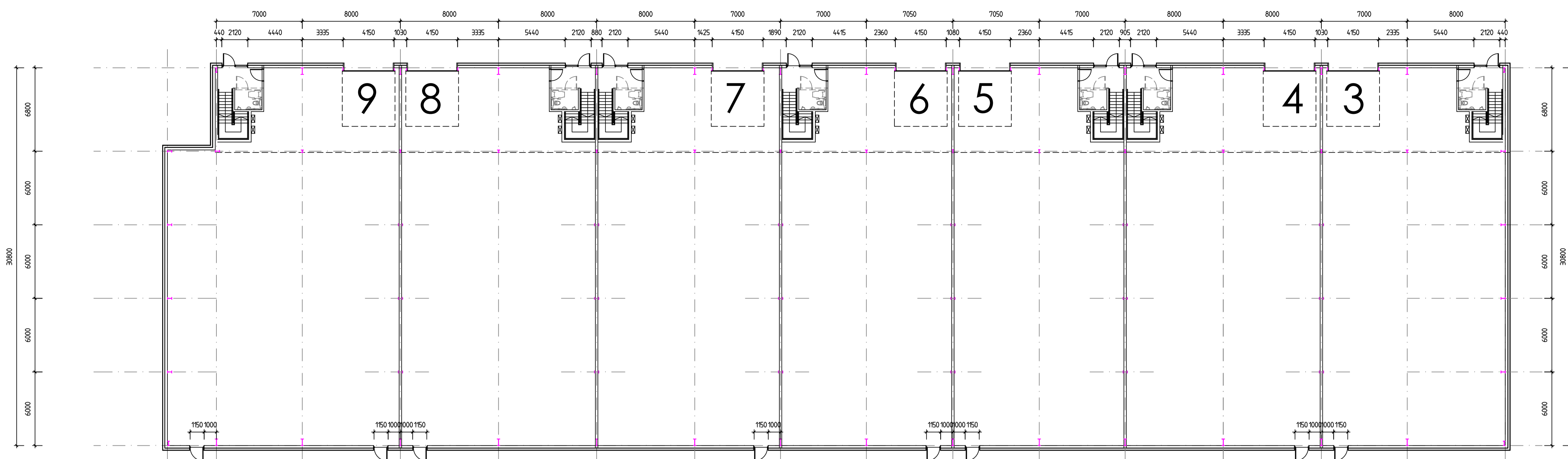
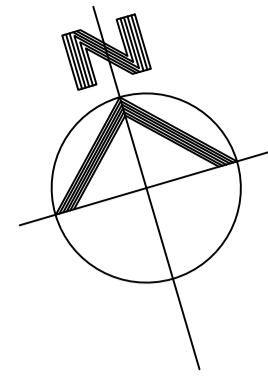
Drg No **C - 222 - TP - 02**

Date **7/2016** Scale **1:200 (A1)** Rev **B**

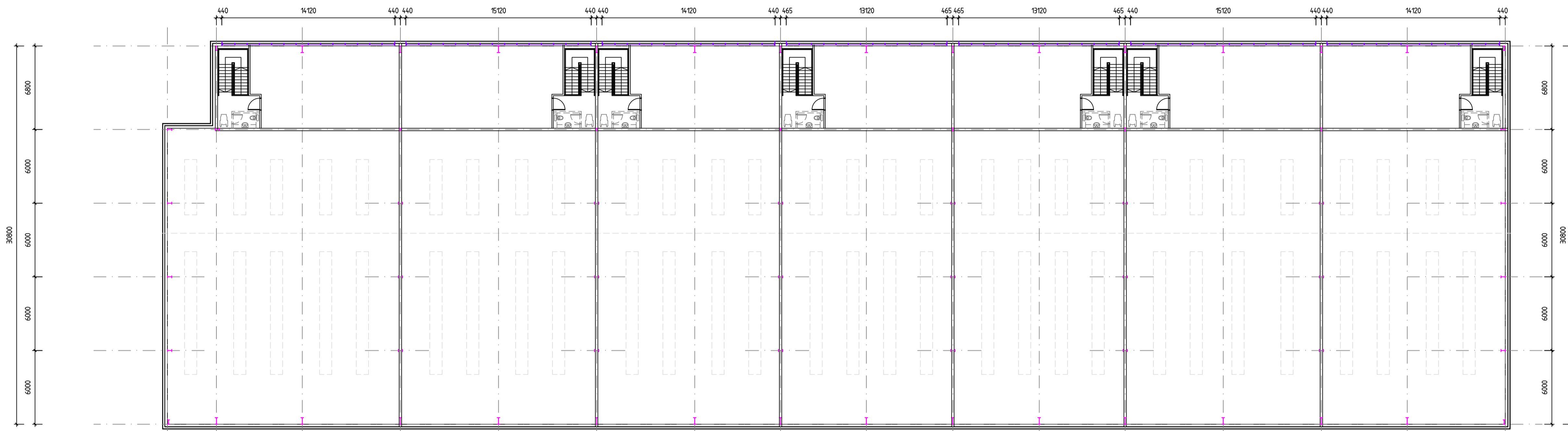
Drawn Checked Planning Drawing

IAN C KING
ASSOCIATES - ARCHITECTS
5 St George's Court
131 Putney Bridge Road
London SW15 2ZPA
Tel: 020 8871 2022 / Fax: 020 8871 2989
E-mail: icka@iancking.co.uk

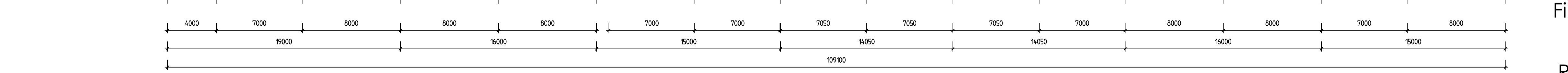
QCA BSI
EN ISO 9001
REGISTERED FIRM
IAN C KING Associates - Architects is the trading name of Garmony Ltd



Ground floor plan

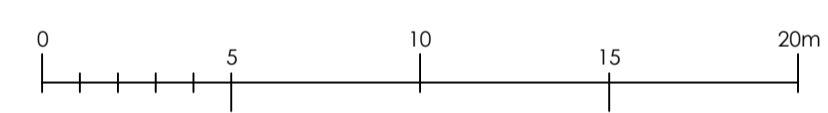


First floor plan



Roof plan

CBC Unit	Gf. area	Mezz. area	Total (GEA)
3	486m ²	112m ²	598m ²
4	504m ²	116m ²	620m ²
5	443m ²	102m ²	545m ²
6	474m ²	109m ²	583m ²
7	504m ²	116m ²	620m ²
8	586m ²	113m ²	699m ²
Total	3,440m ²	770m ²	4,210m ²



- Rev H: 16-3-2017: Building dimensions amended, o/a area kept the same, unit areas amended, PV panels amended
- Rev G: 17-2-2017: Plans changed to create 6 units instead of previous 3
- Rev F: 17-8-2016: FE door added east of entrance to unit 5, machinery platform removed
- Rev E: 3-8-2016: Mezzanines updated, areas corrected, rooflights connected
- Rev D: 26-7-2016: Plant room area added to GF area
- Rev C: 22-7-2016: Extra mezzanine added
- Rev B: 21-7-2016: PV panels amended, boiler and other flues added
- Rev A: 18-7-2016: Boiler enclosure added

Notes
 This drawing is the sole copyright of IAN C KING Associates and no part may be reproduced without the written consent of the above
 Job

Chancerygate
 Enfield

Title
 Units 3 - 5
 Floor and Roof Plans

Org No
 C - 222 - TP - 04

Date 7/2016 Scale 1:200 (A1) Rev H

Drawn Checked Planning Drawing

Units 3 and 4
 18.05 kWp system -
 115.5m² - 76 panels

15% rooflights
 (notional layout shown)

IAN C KING
 ASSOCIATES - ARCHITECTS
 5 St George's Court
 131 Putney Bridge Road
 London SW15 2PA
 Tel: 020 8871 2022 / Fax: 020 8871 2989
 E-mail: ickc@iancking.co.uk
 IAN C KING Associates - Architects is the trading name of Garmony Ltd

BS EN ISO 9001
 REGISTERED FIRM