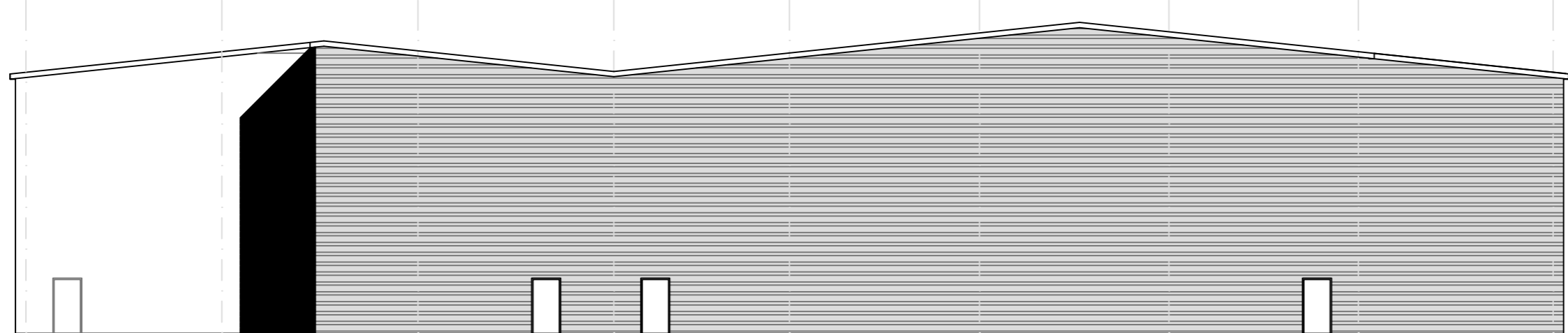
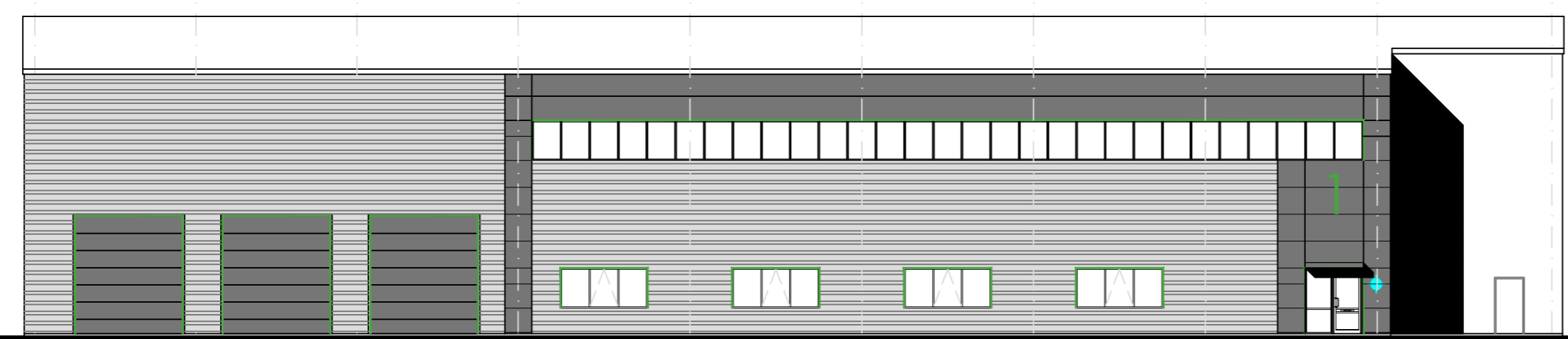


- Profiled roof cladding in HPS200 Goosewing gray BS 10A05
- Merlin Gray BS 18825 gutters, RWPs & gable fascias
- Horizontally laid Micronb composite wall cladding in Merlin Gray BS 18825
- Powder coated aluminium entrance doors and windows in Merlin Gray BS 18825. Entrance door leaf frames in Metallic silver RAL9006 (Part M)
- Coloured insulated loading doors in Merlin Gray BS 18825
- Fire escape doors Metallic Silver RAL 9006
- Horizontally laid profiled wall cladding and related fastenings in Prisma Metallic Silver RAL9006.
- Special RAL 6018 green flashing to jambs & head of entrance doors, windows and loading doors (see photo)

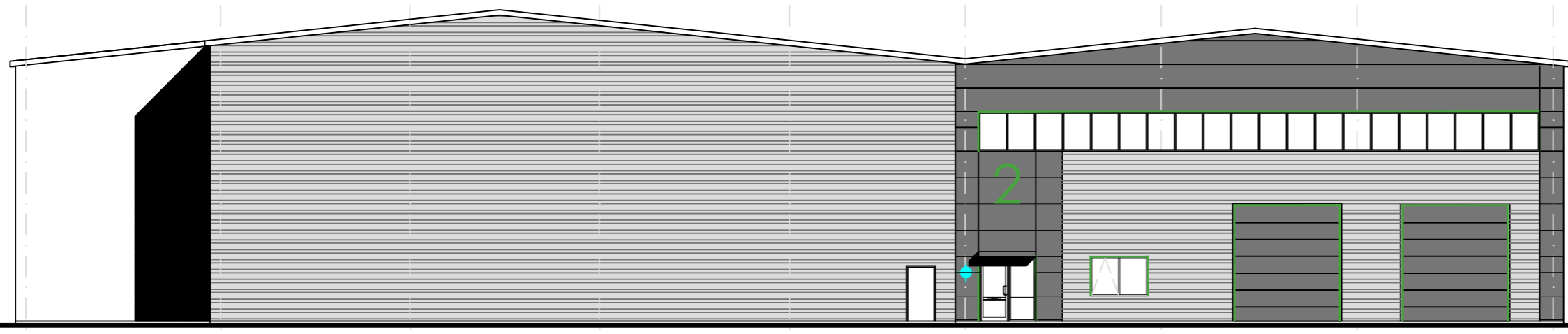
- 1 Unit numbers
3mm powder coated aluminium plate with matching fixings
1500mm high, colour and font to be agreed
- Obscured glazing
- Top hung opening windows
- Building mounted floodlights
- Main entrance f.e. lights (circular high quality fitting)



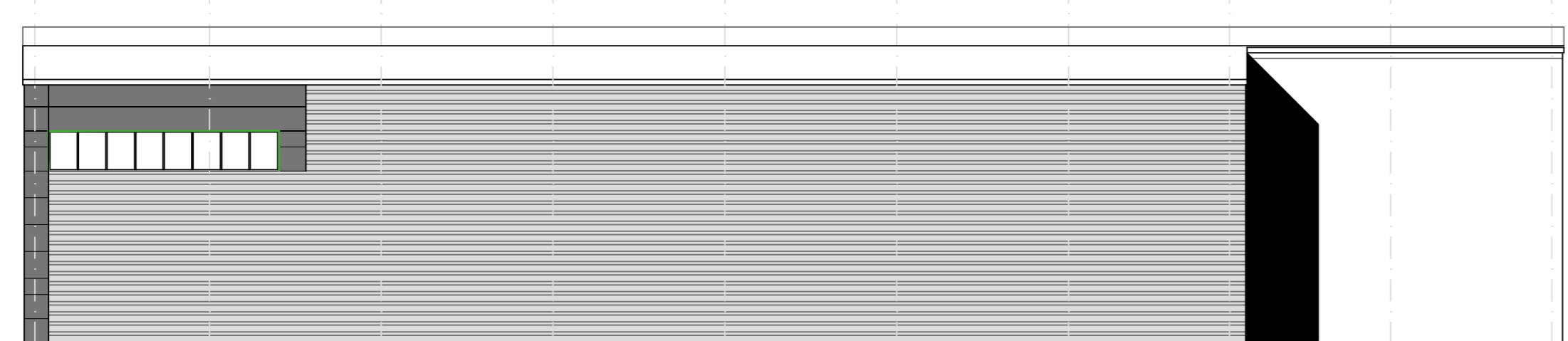
East elevation



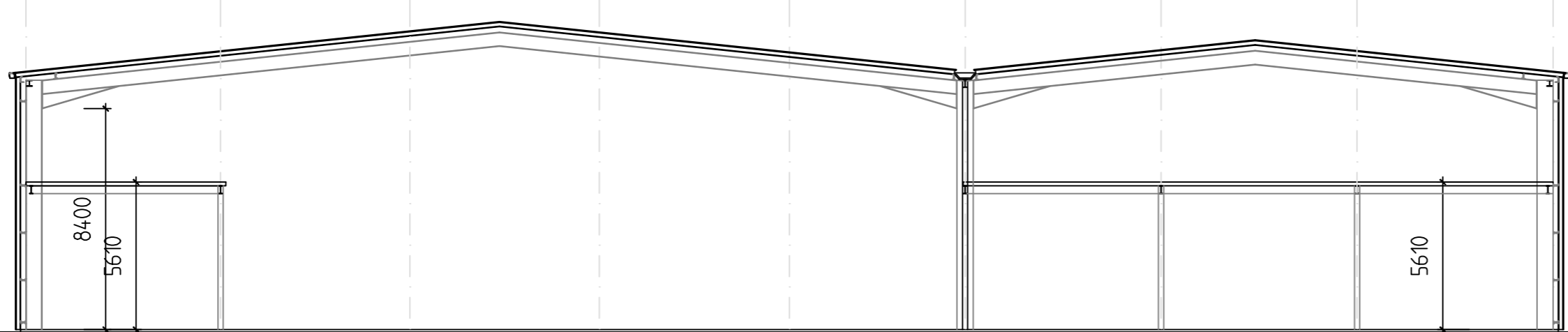
North elevation



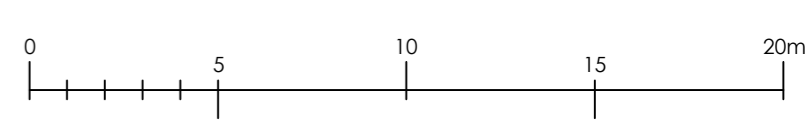
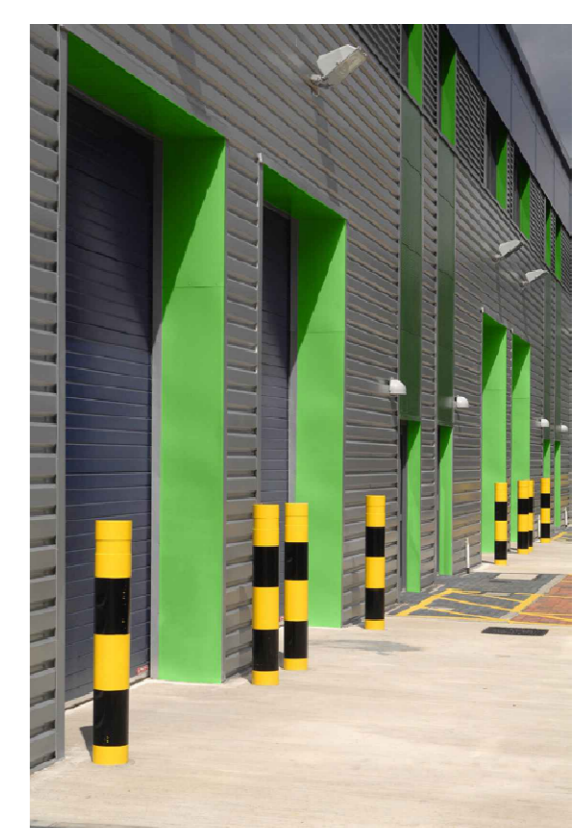
West elevation



South elevation



Section



- Rev D: 16-3-2017: Roof PV panels layout amended
- Rev C: 17-8-2016: External finishes updated
- Rev B: 26-7-2016: Loading door added to unit 2, window moved in unit 2, FE door in unit 1 amended, cladding amended
- Rev A: 21-7-2016: PV panels amended

Notes
This drawing is the sole copyright of IAN C KING Associates and no part may be reproduced without the written consent of the above

Job
Chancerygate
Enfield

Title
Units 1 and 2
Elevations, Section and Roof Plan

Drg No C - 222 - TP - 03

Date 7/2016 Scale 1:200 (A1) Rev D

Drawn Checked Planning Drawing

IAN C KING
ASSOCIATES - ARCHITECTS
5 St George's Court
131 Putney Bridge Road
London SW15 2PA
Tel: 020 8871 2022 / Fax: 020 8871 2989
E-mail: ick@iancking.co.uk

QCA BS EN ISO 9001
REGISTERED FIRM
IAN C KING Associates - Architects is the trading name of Garmony Ltd

