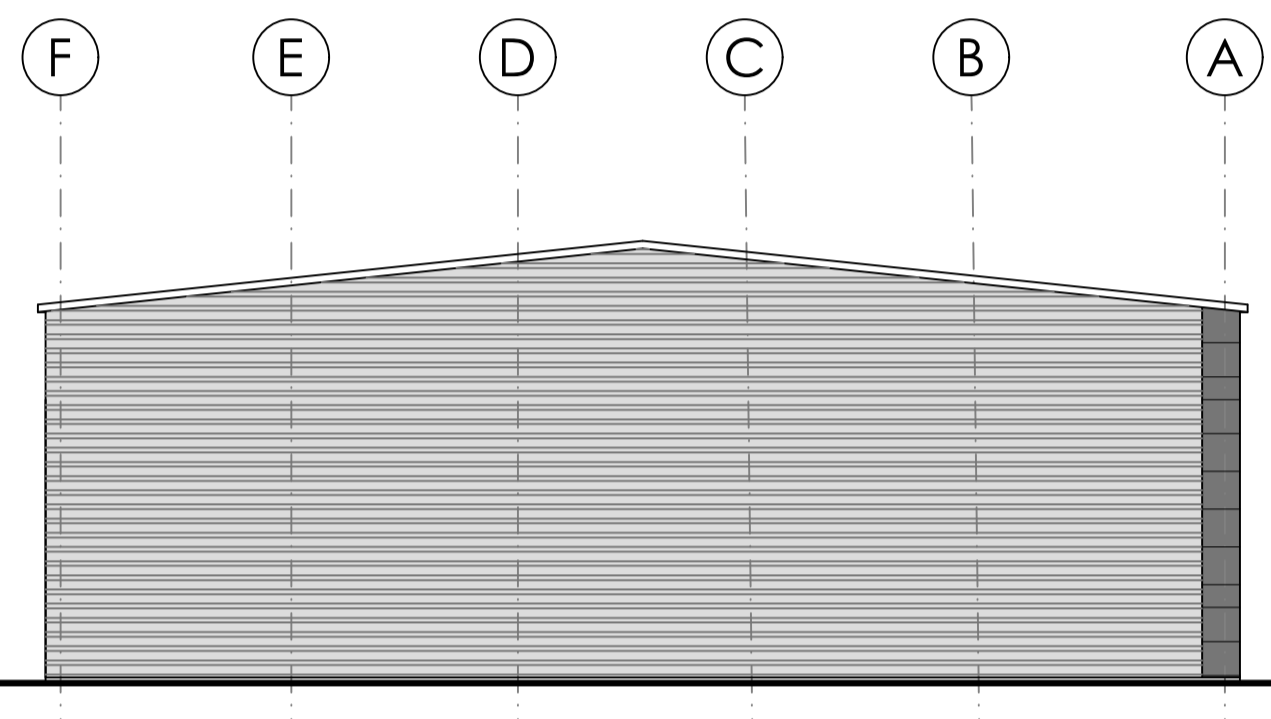
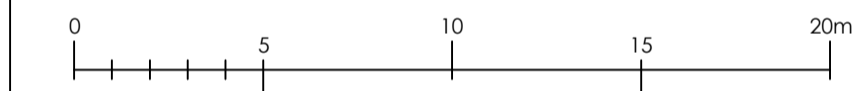
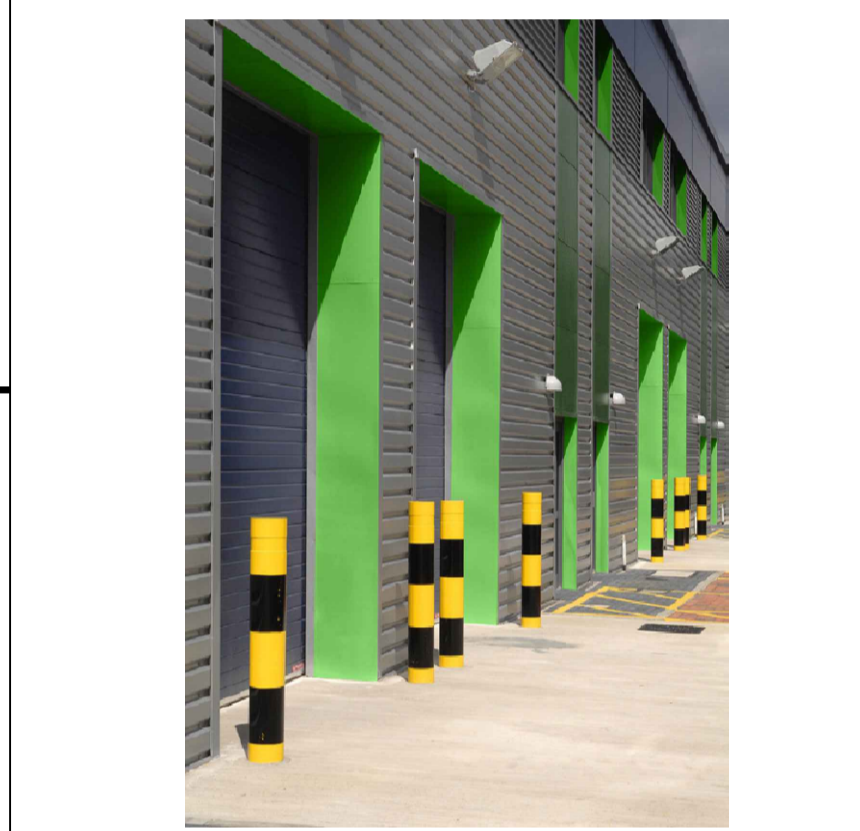


North elevation

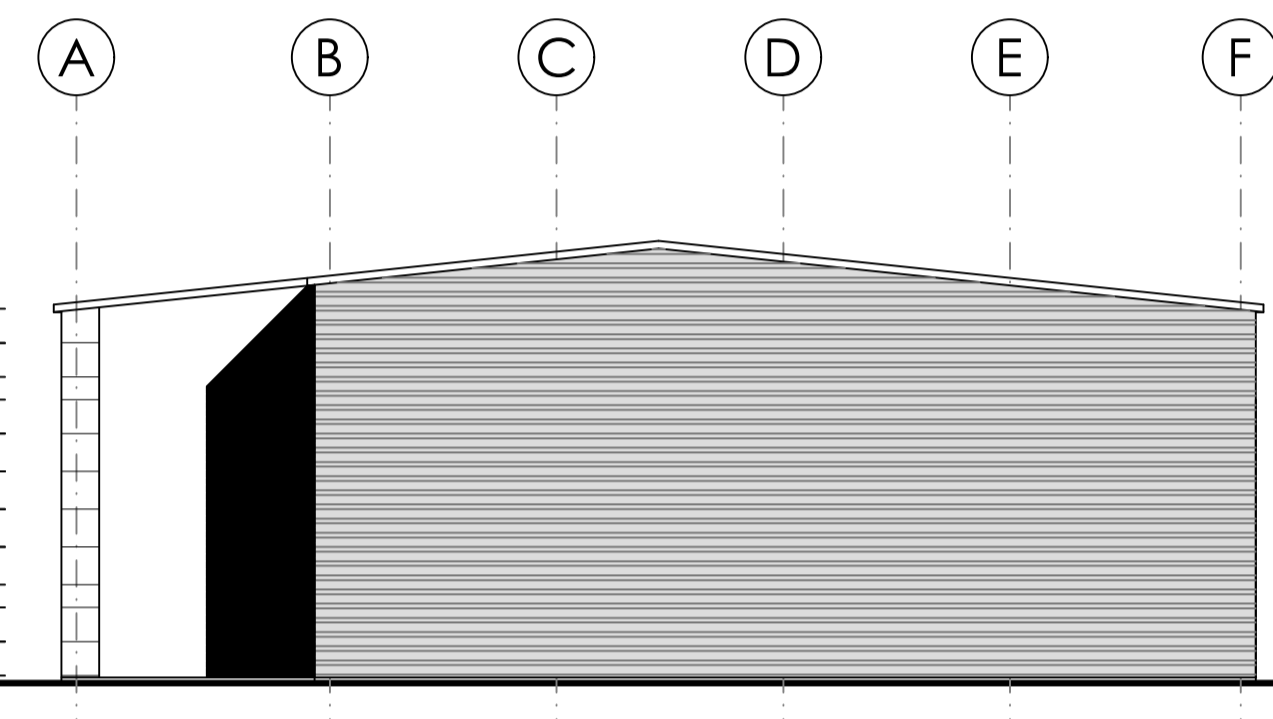
- Profiled roof cladding in HPS200 Goosewing gray BS 10A05
- Merlin Gray BS 18B25 gutters, RWPs & gable fascias
- Horizontally laid Microrib composite wall cladding in Merlin Gray BS 18B25
- Powder coated aluminium entrance doors and windows in Merlin Gray BS 18B25 Entrance door leaf frames in Metallic silver RAL9006 (Part M)
- Coloured insulated loading doors in Merlin Gray BS 18B25
- Fire escape doors Metallic Silver RAL 9006
- Horizontally laid profiled wall cladding and related flashings in Prisma Metallic Silver RAL9006.
- Special RAL 6018 green flashing to jambs & head of entrance doors, windows and loading doors (see photo)

1 Unit numbers  
3mm powder coated aluminium plate with matching fixings  
1500mm high, colour and font to be agreed

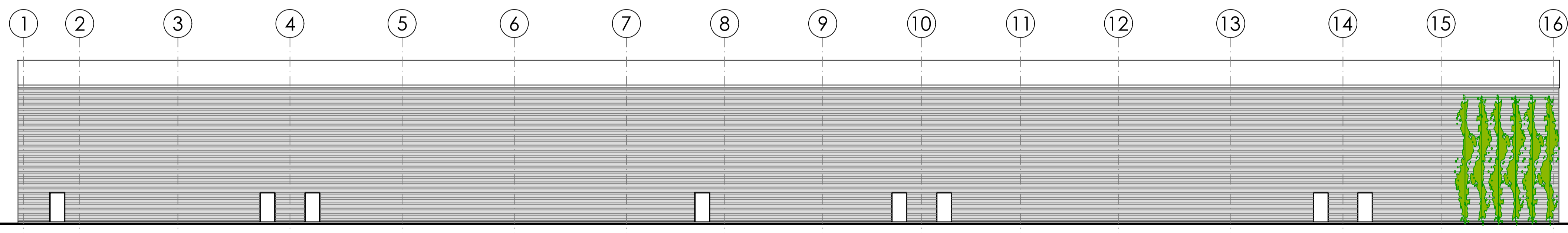
- Obscured glazing
- Top hung opening windows
- Building mounted floodlights
- Main entrance i.e. lights (circular high quality fitting)



East elevation

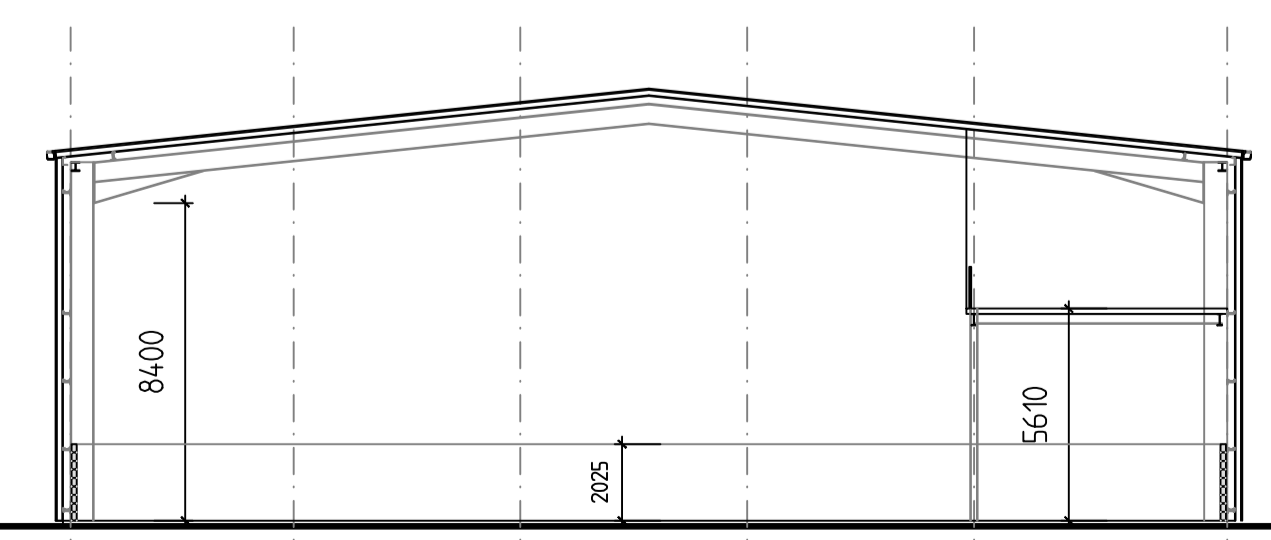


West elevation



South elevation

6m wide and 9m high green wall (wire system) to the end of the building



Section

- Rev G: 9-3-2017: Elevations changed as plans, 6 units instead of previous 3, green wall to unit 3 rear corner
- Rev F: 17-8-2016: FE door added east of entrance to unit 5, external finishes updated
- Rev E: 3-8-2016: Water tank and salt saturator added
- Rev D: 26-7-2016: Cladding and plant room height amended
- Rev C: 22-7-2016: Extra mezzanine added
- Rev B: 21-7-2016: Boiler ad other fues added, GF windows removed
- Rev A: 18-7-2016: Boiler enclosure added

Notes  
No dimensions are to be scaled from this drawing. Contractors must verify all figured dimensions at the site before commencing any work or making any shop drawings.  
This drawing is the sole copyright of IAN C KING Associates and no part may be reproduced without the written consent of the above  
Job

Chancerygate  
Enfield

Title  
Units 3 - 5  
Elevations & section

Dwg No C - 222 - TP - 05

Date 7/2016 Scale 1:200 (A1) Rev G

Drawn Checked COM Regs P-Preliminary A-for Approval T-Tender C-Construction

**IAN C KING ASSOCIATES - ARCHITECTS**  
 5 St George's Court  
 131 Putney Bridge Road  
 London SW15 2PA  
 Tel: 020 8871 2022 / Fax: 020 8871 2989  
 E-mail: icka@iancking.co.uk  
 Web: www.iancking.co.uk  
 REGISTERED FIRM  
 IAN C KING Associates - Architects is the Trading name of Gammony Ltd